



AVANTI SLINGSHOT: SOLUTIONS FOR THE PRINT AND MAIL INDUSTRY.

THE LANDSCAPE

You may have originally started as a direct mail shop but today you've likely expanded your business into printing, digital marketing campaigns, data mining, website design and other value added services for your customers.

Your customers are aware of how important it is to deliver targeted marketing campaigns, and you strive to meet their needs with the necessary products and services they require. As a Print and Mail service provider equipped with the right tools, you can offer your customers a competitive edge. You need a system that can help you manage your workflow from the original quote to the final billing.

THE SOLUTION

How can you meet their needs while providing the highest level of service?

Avanti Slingshot for Print and Mail Shops

Avanti Slingshot's Direct Mail management module gives you the ability to provide comprehensive estimates, including postage, postage tasks and sorting tasks that carry through to the final invoice.

Direct mail pricing and costing, mail drops and repetitive mail programs are handled easily, allowing you to capture all mailing information and support pre-negotiated rates. You can now plan, manage and track multiple drops including items to be part of the drop, quantities, locations and the mandatory completion dates for the mail drop.

Our Direct Mail Management module provides your print shop with a complete end-to-end business management solution.

What our customers say

"Within the first three months of going live with Avanti Slingshot, we had saved as much as eight hours/day just in order input, tracking and managerial tasks."

Armando Pena, COO of Printing and Marketing Group, Inc.

HOW WILL YOU BENEFIT?

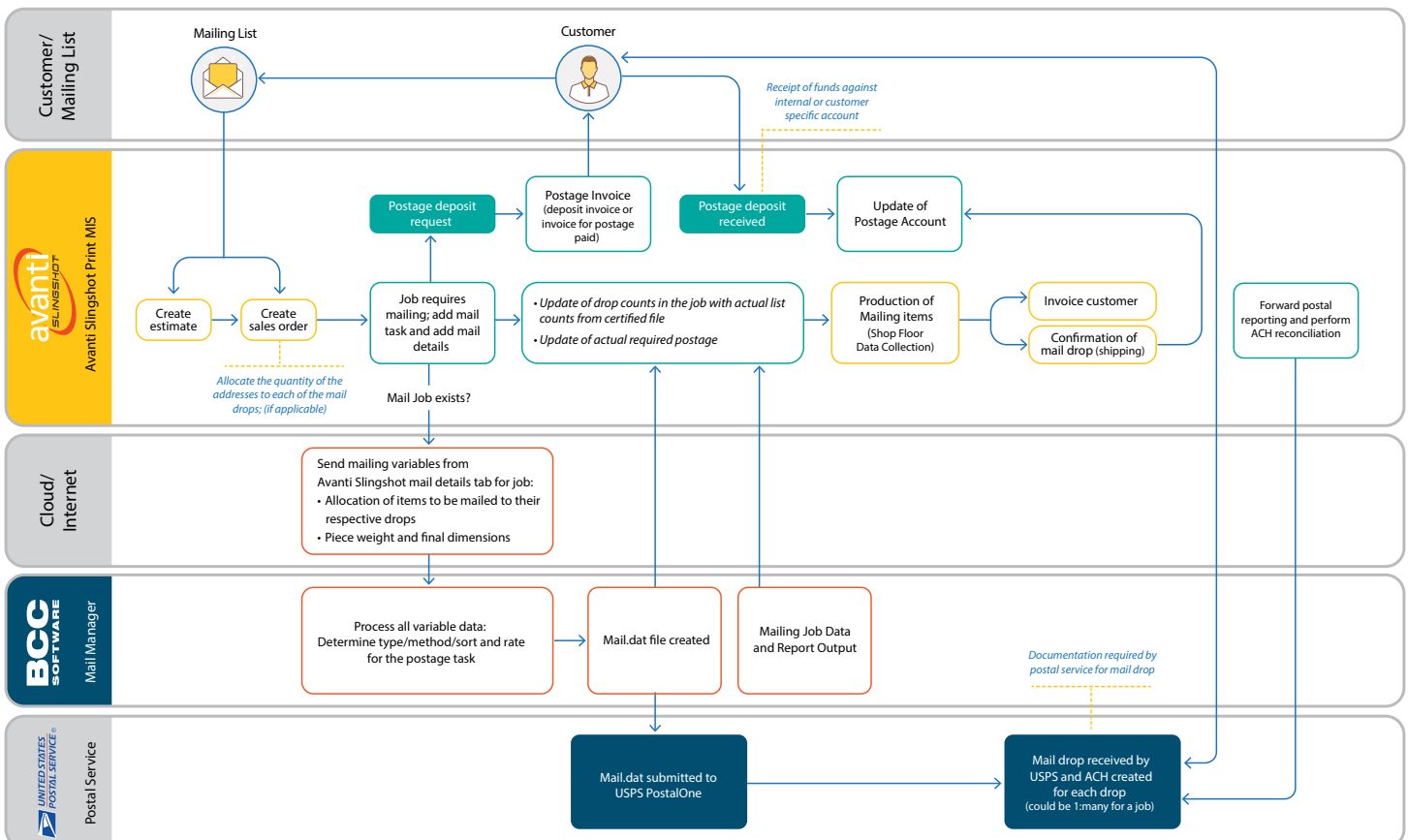
Ability to track and manage postage: Avanti Slingshot's Direct Mail Management allows you to track the actual postage used for each job with its Postage Accounting features. Deposit management and reconciliation of each client's postage activity, as well as capturing and reporting actual usage is also included. With our built-in ACH reconciliation support, you can now streamline your mailing processes for reconciling postage in "real-time," eliminate the countless spreadsheets and save time, effort and money.

Streamline mailing processes: For companies dealing with multiple postage/mail projects, keeping track of every detail

can be daunting. Having all mailing details attached to a sales order (applying to the whole job) enables CSR's to capture the postage/mail project details from the get-go. By including all the postage/mail project details as part of the job, users can quickly see all of the required components of the job relevant to mailing/postage.

Eliminate touches: Integrated with BCC Software Mail Manager™, Avanti Slingshot will provide you with seamless communication of the mailing and production requirements for a job, enabling uninterrupted processing of mail jobs and full palletization support with merge/purge efficiencies.

Avanti Slingshot workflow for Print and Mail



WHY AVANTI AS YOUR PARTNER OF CHOICE

Adapt to your needs

Avanti's software is designed with flexibility in mind, giving us the ability to completely model your print shop regardless of the type of presses, prepress software or finishing activities you offer as value added services. Avanti's solution adapts to your business model, not the other way around.

End-to-end solution

Avanti provides your business with a complete end-to-end solution including:

- web-to-print integration, providing your customers with job entry control and reducing the need for you to re-key information.
- sale order information can be passed directly to next steps in your production processes with our fully integrated production modules.
- advanced business intelligence capabilities to foster better decision making through the eDashboard.

Ability to impact your top line as well as your bottom line

Our Print MIS solution helps to understand the costs and can positively impact productivity. Avanti takes it further by providing tools that also help you grow your print shop's revenue such as Avanti's Customer Relationship Management (CRM), which gives you an intimate understanding of your customer base.

Depth of expertise

Avanti's implementation team have collectively implemented 150+ Print MIS systems successfully. Not only does Avanti have the depth of expertise and knowledge for your software implementation but can also offer up best practices to help improve your production workflow.

JDF-certified

Avanti's award-winning Job Definition Format or JDF framework provides fully automated integration into the industry's leading prepress, press and workflow applications.





“FOR PRINT AND MAIL SHOPS THE INDUSTRY STANDARD TO PRODUCE AN ESTIMATE IS 24-36 HOURS. WITH AVANTI SLINGSHOT WE WERE ABLE TO GET THAT DOWN TO 1-2 HOURS – AND THAT’S A REAL COMPETITIVE EDGE.”

TODD MCNETT, VARISPARK

avanti

WE HAVE ANSWERS®

At Avanti, our goal is to help you deliver more jobs, in less time, with the confidence in knowing that every aspect of your shop is integrated into one powerful platform.

Award-winning, JDF-certified Avanti Slingshot allows for the sophistication required by today’s Print and Mail shops. The platform is also able to manage multiple lines of business, handle large/grand format, fulfillment, as well as digital and offset print.

Connect islands of automation, eliminate breakpoints in your workflow, and get the information you want – when you want it, and where you want it – easily, with Avanti Slingshot.

From order entry through to production and billing, Avanti Slingshot enables you to work more efficiently, control your costs and move more jobs through the shop with ease.

www.avantisystems.com
1.800.482.2908
AskAvanti@avantisystems.com

