



Print ePS © 2025 All rights reserved.

# Avanti Slingshot<sup>®</sup> Print MIS

Deliver more jobs in less time for greater profitability



# Sharpen your output efficiency

Avanti Slingshot is your JDF-certified print management information platform with the flexibility to meet your business requirements, so that you can focus on your customers' needs. Make informed business decisions that maximize customer and product profitability, based on key ROI drivers.

- Connect islands of automation, eliminate breakpoints in your workflow, and easily get the information you want – when you want it, and where you want it.
- From order entry through to production and chargebacks, Avanti Slingshot enables you to work more efficiently, control your costs and move more jobs through the print shop with ease.
- Avanti Slingshot acts as the information hub of the print shop – automatically sending and receiving data from the different software applications and equipment throughout the print shop.
- The implementation process is focused on ensuring Avanti Slingshot is tailored to your needs and improving your workflow and business processes.



## Manage, integrate and solve your print production challenges

Avanti Slingshot helps you control costs and manage your jobs through the shop with ease with a flexible, scalable solution. Utilize core modules to manage your entire print ecosystem including estimating, inventory management, job onboarding, tracking, ticketing, fulfillment and chargebacks.



# Take your analytics further with the **latest integrations**

Integrate Avanti Slingshot with other workflow solutions and ensure consistent information with additional data visibility down to the job and document level. These solutions will further enable you to make sure that you are growing revenue and profitability.

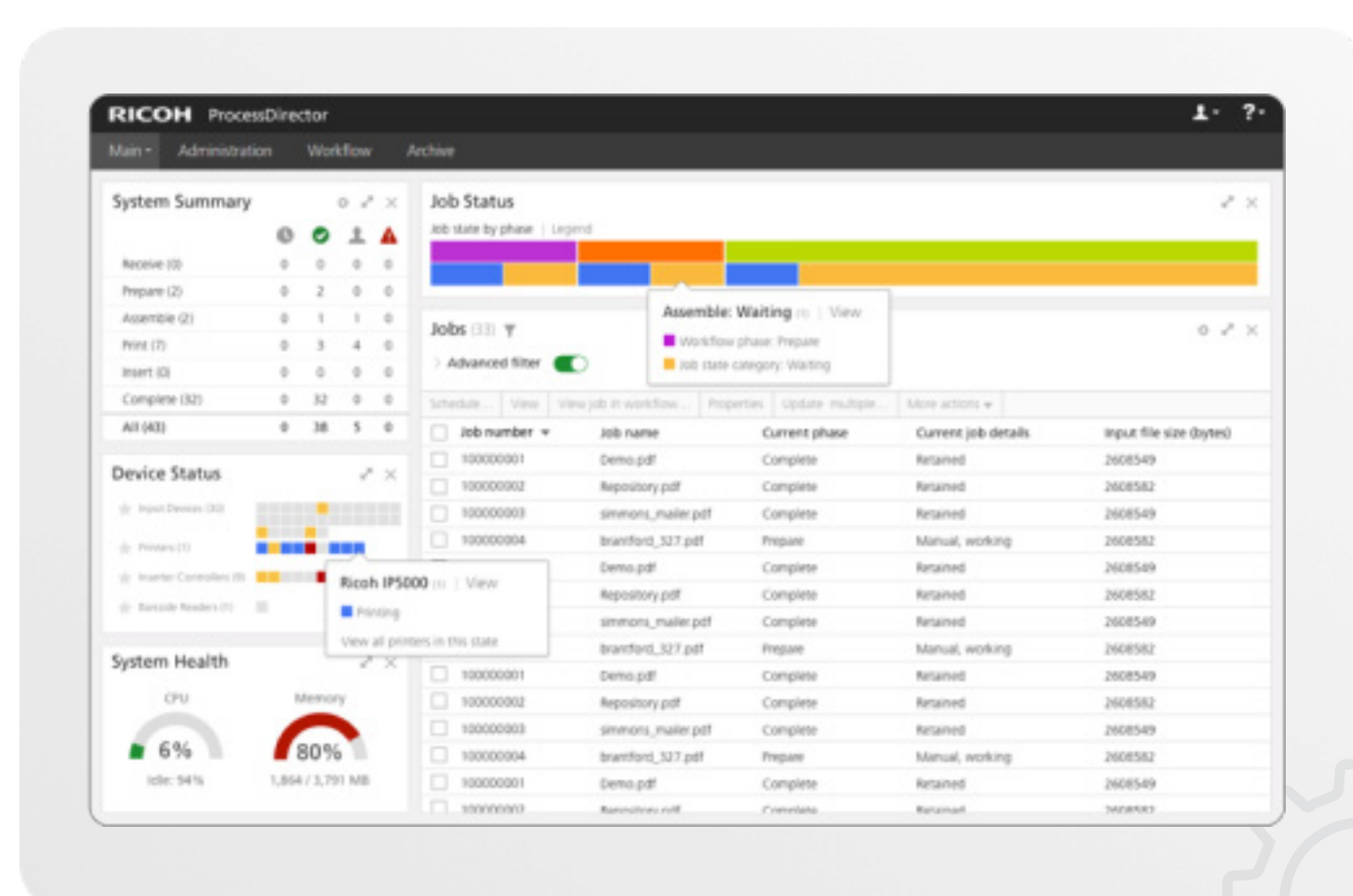
## Workflow Automation

RICOH ProcessDirector is a leading **automated end-to-end workflow management solution** designed

TM

to capture, transform, and manage data and processes for greater operational efficiency and profitability.

- Visualizing job and document production volume to identify bottlenecks and areas for process improvement.
- Gain more awareness into detailed job and customer information to increase customer satisfaction.
- By integrating, these platforms understand more detailed historical trends, costs, job and device information and enhance division and operational performance.



## Real-Time Visual Analytics

In today's ever-evolving print marketplace, success hinges on data-driven decisions. Leveraging a vendor-agnostic approach, Ricoh Predictive Insight uses automated data collection, to provide real-time organization-wide visibility to print production, empowering you to make strategic business decisions that drive success.

- Track consumable usage, device uptime and other operational trends impacting your production
- Empower your business with automated data tracking and optimized operational metrics via real-time dashboards
- Cloud-based subscription eliminates the need for significant, upfront IT investments





## About **Avanti**

At Avanti, a Print ePS Company, our goal is to help you deliver more jobs, in less time, with the confidence in knowing that every aspect of your shop is integrated into one powerful platform.

Award-winning, JDF-certified Avanti Slingshot allows for the sophistication required by today's Print and Marketing Services Providers. The platform is able to manage multiple lines of business, handle large/grand format, digital and offset print, as well as mail and fulfillment workflows.

Connect islands of automation, eliminate breakpoints in your workflow, and get the information you want - when you want it, and where you want it - easily, with Avanti Slingshot.

From order entry through to production and billing, Avanti Slingshot enables you to work more efficiently, control your costs and move more jobs through the shop with ease.

Learn more at:

[www.avantisystems.com](http://www.avantisystems.com)

